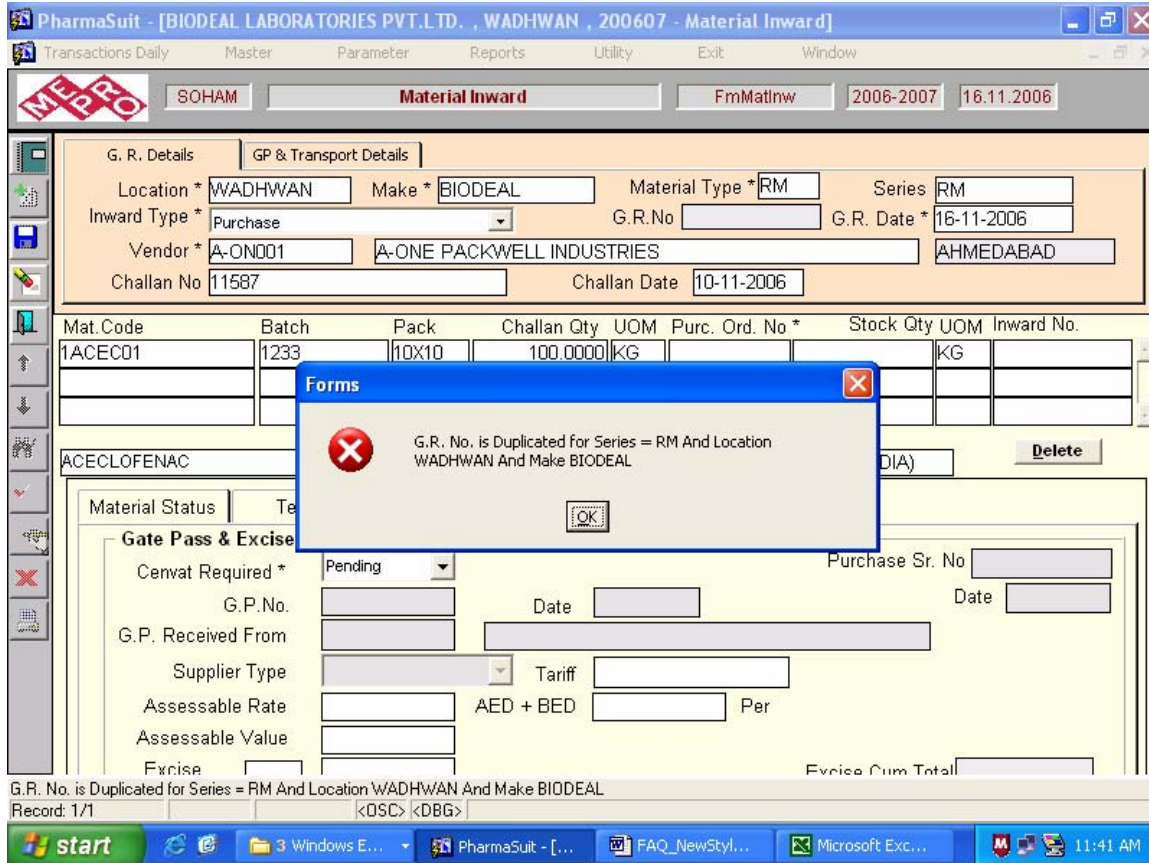


FAQ_0033

Module : FmMatInw

Issue: We can not make material inward entry due to following error

Error: GR No. is duplicate for Series: RM Location = Wadhwan and Make = Biodeal



Possible reasons:

1. Number is generated with common Series between Material Inward and Material Opening Stock. User had changed last number in Series Master which is already used in Opening Stock.

Remedy: Change Last Number in Series Master.

History:

Date of Detection	Client	Programmer	Form/Report	Permanent Solution	Date of Solution
10-Nov-06	Astral	KK	FmMatInw , FmMatOps k	Create two different series for regular and opening. And carefully select respected series.	21-Nov-06