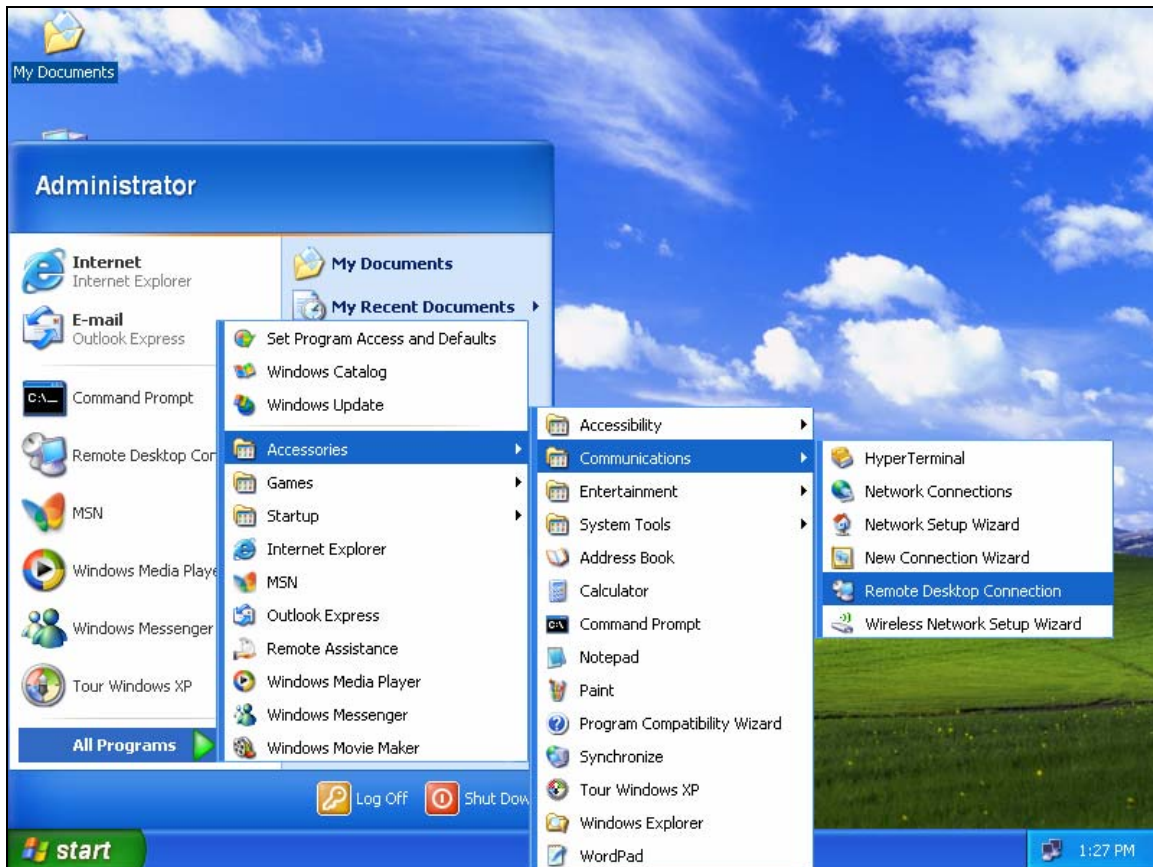


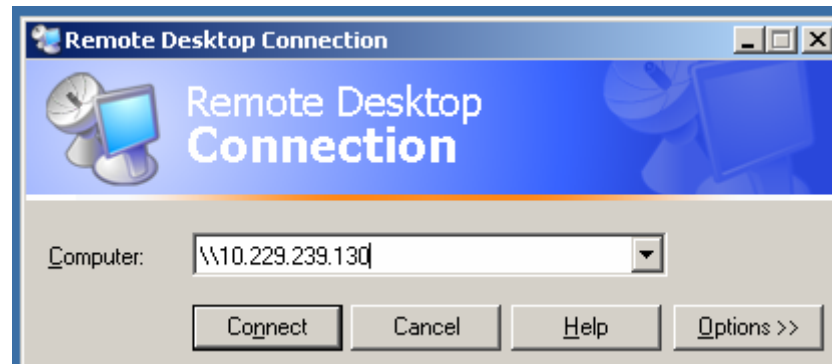
FAQ: 0018: How to use remote desktop?

Solution:

- Go to below path:
- **Path:** Start->All Programs->Accessories->Remote Desktop Connection **OR** Start->All Programs->Accessories->Communications->Remote Desktop Connection



- Enter your real IP number in 'Computer' edit box.
- Click on 'Connect'.



- Enter user name and password of company of which you want to use through remote desktop.
- Press 'OK' button.